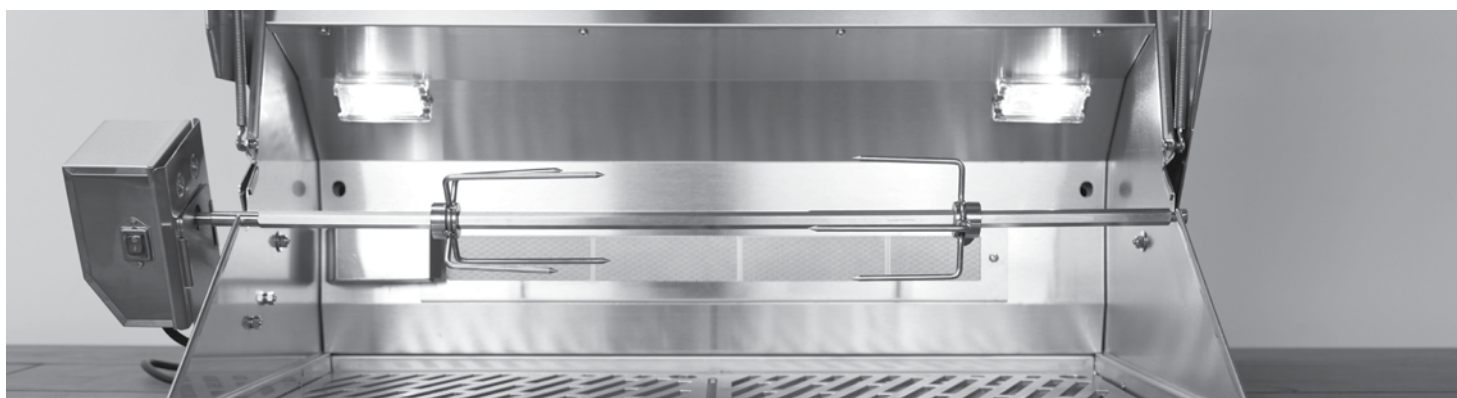
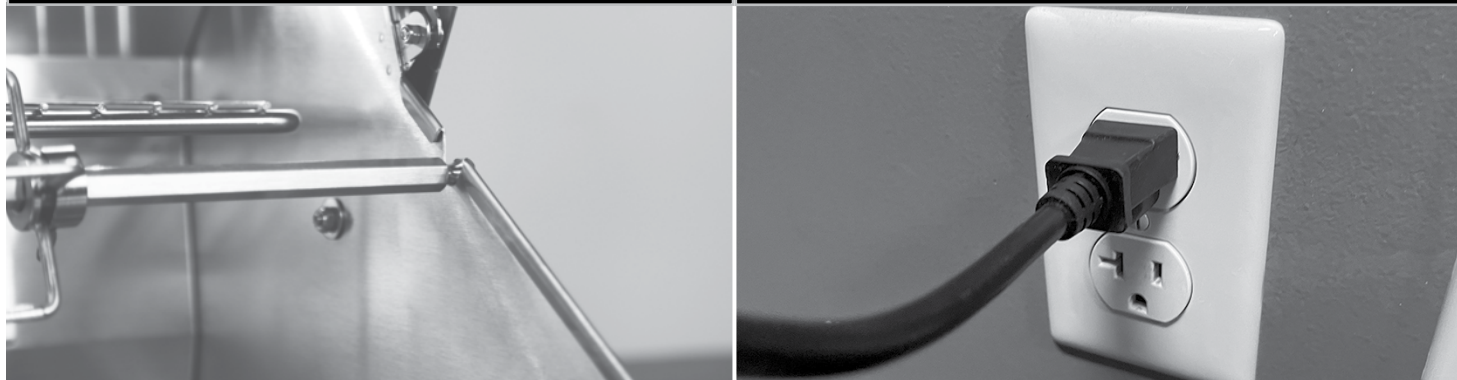


HOW TO INSTALL A ROTISSERIE

11 The other end will rest on the notch in the grill.
*Note: Do not force it. Rotate your skewer until it slides in with ease.

12 Plug in your rotisserie motor into the outlet.



**INSTALLATION COMPLETE
READY TO ENJOY!**

DO NOT RETURN TO STORE!



CALL US FIRST

For immediate help with installation, product information or if your product arrives damaged, please call our toll free number at:

602-344-4840

(Monday - Friday, 8:00AM - 5:00PM, AZ Mountain Time)

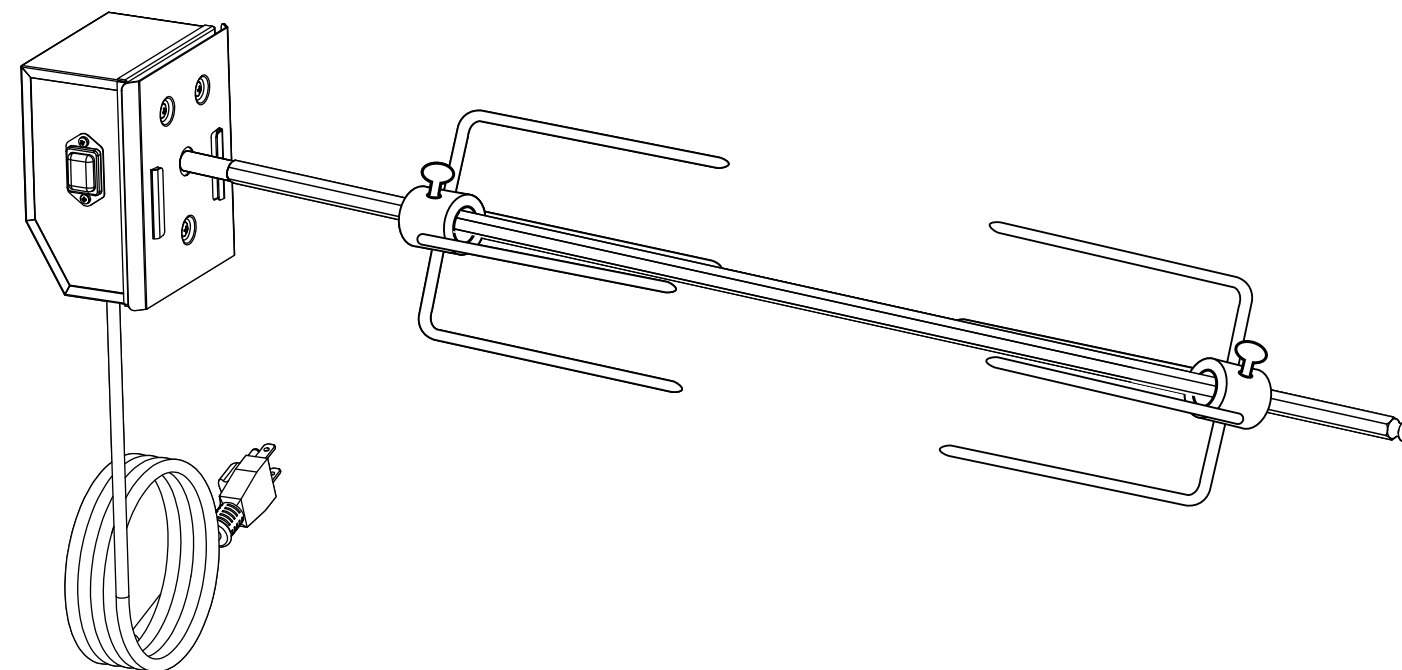
Or email us at

customerservice@wildfireoutdoorliving.com

OUR STAFF IS READY TO PROVIDE ASSISTANCE



**Rotisserie
Set up Manual**
For Liquid Propane and Natural Gas Grill



Available in
30" - 36" - 42"

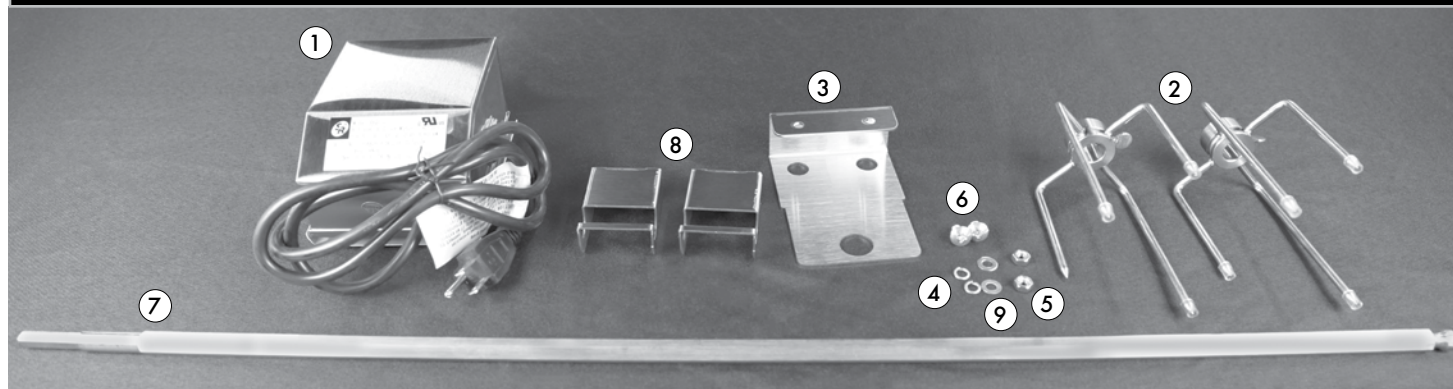
FOR OUTDOOR USE ONLY

HOW TO INSTALL A ROTISSERIE

The following tools are required to assemble this Wildfire Rotisserie:

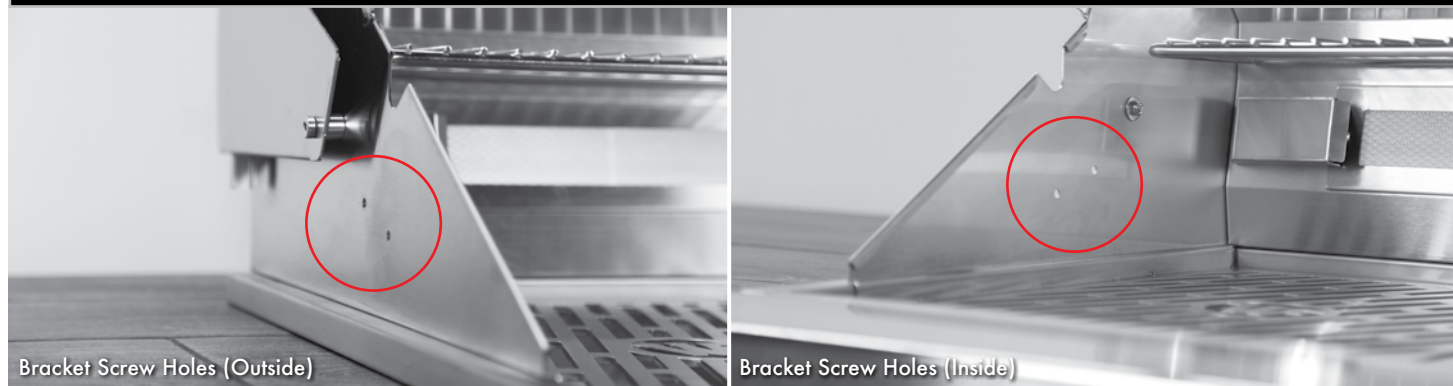
- Phillips Screw Driver
- 10mm Wrench

1 Unbox. Make sure all parts are included before installation. If any parts are missing call customer service at 602-344-4840 or email at customerservice@wildfireoutdoorliving.com.



- | | | | |
|------------------------------------|--------------|--------------------------------|-------------------------------|
| ① (1) Rotisserie Motor (25lbs Max) | ② (2) Forks | ③ (1) Rotisserie Motor Bracket | ④ (2) Washers |
| ⑤ (2) Nuts | ⑥ (2) Screws | ⑦ (1) Skewer | ⑧ (2) Skewer Storage Brackets |
| ⑨ (2) Lock Washers | | | |

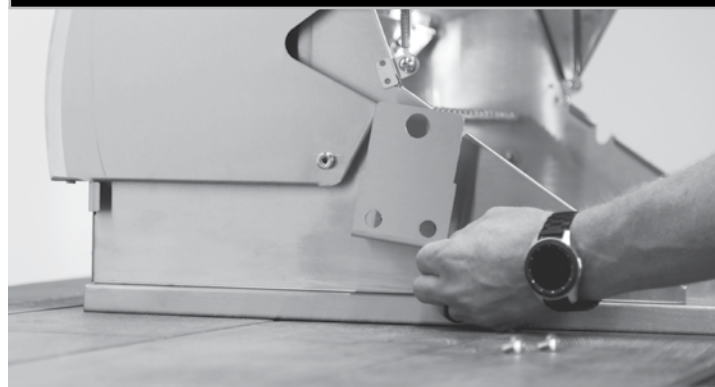
2 Bracket screw holes. (These are intentionally angled)



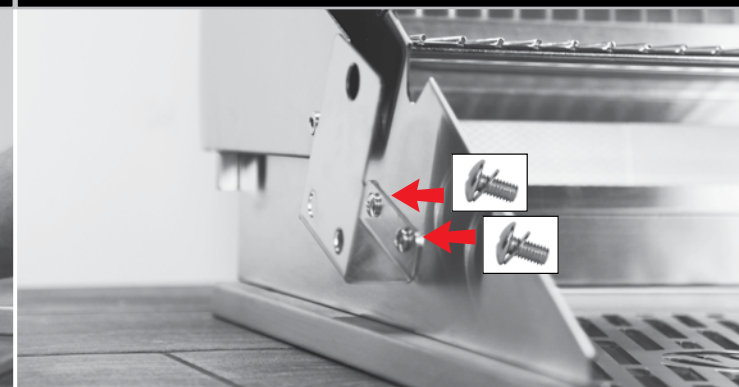
Bracket Screw Holes (Outside)

Bracket Screw Holes (Inside)

3 Align the bracket to the holes on the left side of grill.
*Note: This is the only side to mount bracket.

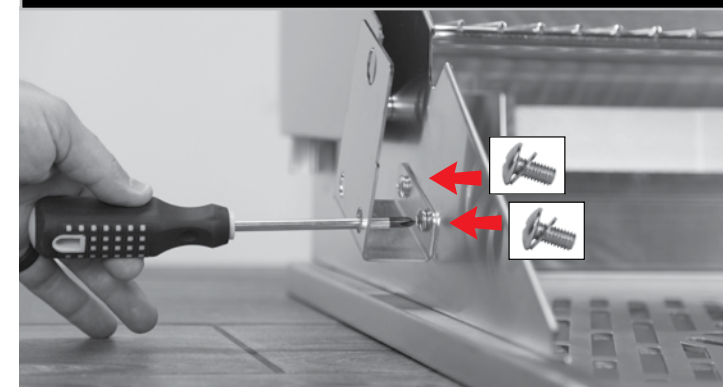


4 Put a flat washer onto the inside of the small screw.



HOW TO INSTALL A ROTISSERIE

5 Using your phillips screwdriver push the screw with the washer on it through the aligned holes.



6 Slide lock washer onto screw from the inside of the grill. Place nut onto screw tighten with your finger. Repeat this step for the other screw.



7 Using your 10mm wrench and phillips screwdriver hold screw and tighten the nut.



8 Place your rotisserie motor on the bracket.
*Note: Our rotisseries can hold a maximum of 25lbs.



9 Place your forks on the skewer. Adjust skewers to size and **tighten wing nuts**.
*Note: Our rotisseries can hold a maximum of 25lbs.



10 Slide your skewer into the motor.
*Note: Do not force it. Rotate your skewer until it slides in with ease.

