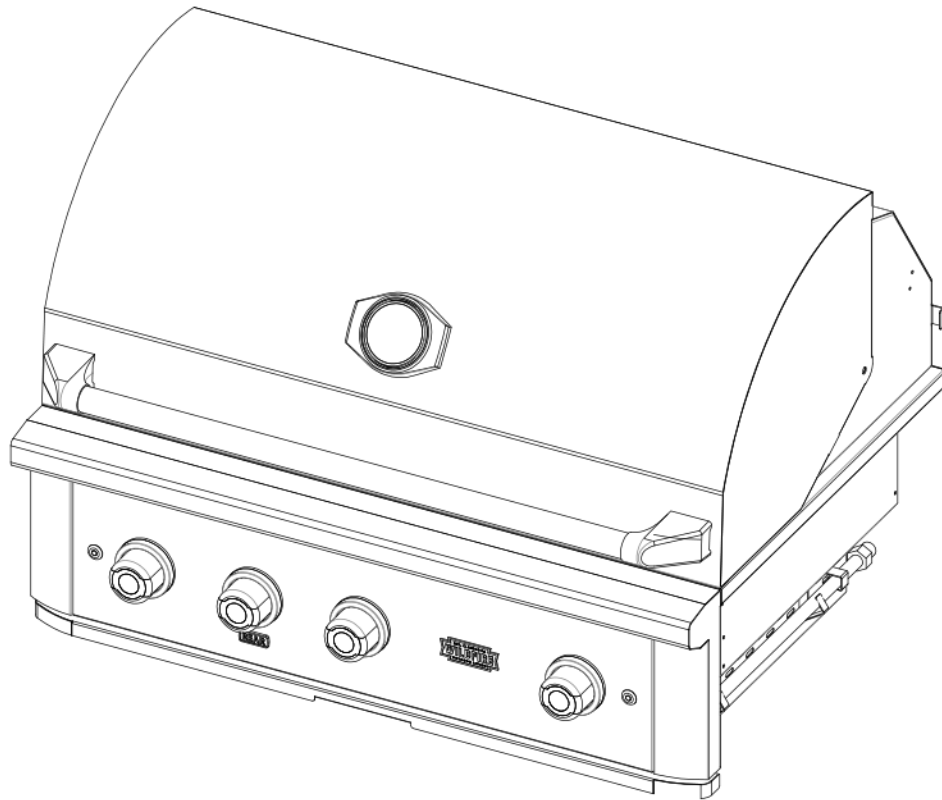


NATURAL GAS & LIQUID PROPANE CONVERSION GUIDE



30" • 36" • 42"
RANCH PRO GRILL



FIG 1.1

LP Conversion



FIG 1.2

Main Burner Orifices



FIG 1.3

Back Burner Orifice

Your conversion kit will arrive with all the parts needed to convert your natural gas grill to liquid propane (Fig 1.1) or natural gas (Fig 1.4).

Included

- Gas specific regulator
- Natural gas or liquid propane conversion orifices
- Infrared conversion orifice

The conversion kit is made to work across Wildfire's entire collection, for this application we will need 2-4 of the conversion orifices (Fig 1.2), the gas specific regulator, and the infrared conversion orifice (Fig 1.3).

FIG 1.4

NG Conversion



FIG 1.2

Main Burner Orifices



FIG 1.3

Back Burner Orifice

Natural Gas (NG) Conversion Kit Part #'s

No.	Description	Qty	Part No.
1	NG Conversion	1	10-00020-NG Regulator
2	Main Burner Orifice	4	02-010456
3	Back Burner	1	02-01054

Liquid Propane (LP) Conversion Kit Part #'s

No.	Description	Qty	Part No.
1	LP Conversion	1	10-00023-LP Regulator
2	Main Burner Orifice	4	02-01045
3	Back Burner	1	02-01053

You will also need the following tools:

- Phillips head screwdriver
- 1/4" socket
- Phillips head right angle ratchet (optional)
- Adjustable wrench



STEP 1



Start by removing all the cooking grates and flame tamers, to gain access to the burners.

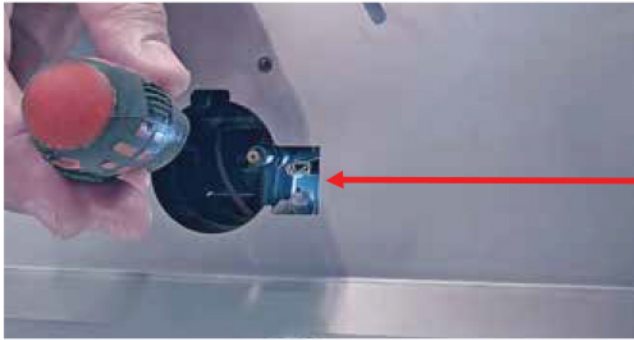
Remove the brackets (see **STEP 2**) securing the burners in place shown in figure, by unscrewing the two Phillips head screws.

STEP 2



Once all burner brackets have been removed you will then need to remove the cotter pins from burners located under the grill.

This is done by lifting up the end furthest from the front and gently pulling forward. If you meet any resistance stop and try a slightly different angle.



STEP 3

With the burners removed you may now remove the old gas orifices by using a 1/4" socket. Repeat this process for each burner.

After removing the old gas orifices, the new orifices provided (Fig 1.2) in the conversion kit can be installed by carefully using the socket to hold the orifice and screwing it in.

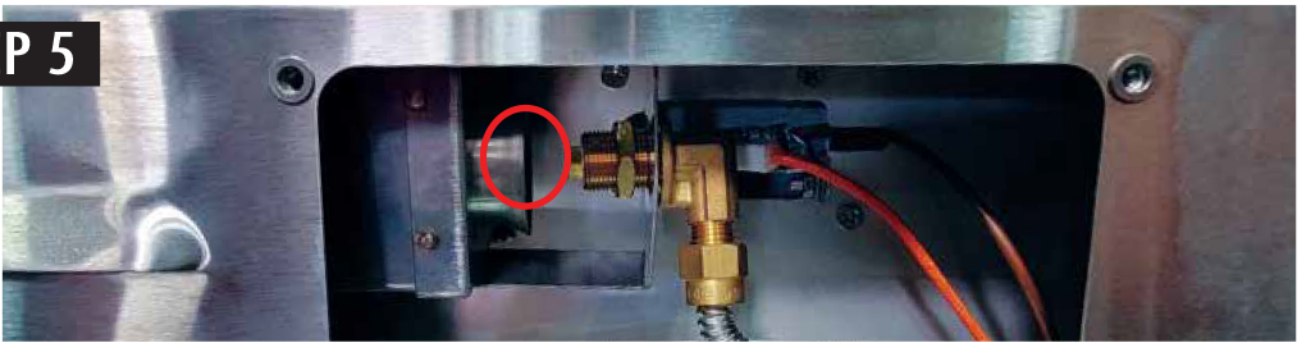
Repeat this process on all burners before.

STEP 4



To convert the infrared burner (back burner) orifice, simply unscrew the small panel shown in **STEP 4** to the rear of the grill using a Phillips head screwdriver.

STEP 5



With the panel removed you will be able to unscrew the infrared burner orifice from it's mount by removing the bolt.

Simply unscrew the old infrared burner orifice and screw in the new provided orifice. (Fig 1.3) Once the new orifice is installed, you may reverse the last two steps to reinstall the fitting.



NG Connection



STEP 6

LP Connection

With everything reassembled remove the original regulator at the rear of the grill and install the provided appropriate regulator from the conversion kit.

CONGRATULATIONS,

your Wildfire Ranch Pro Grill has now been fully converted to the gas type of your choice.

602.344-4840 • wildfireoutdoorliving.com • customerservice@wildfireoutdoorliving.com

Copyright© 2024 RPG Brands (Wildfire Outdoor Living). All rights reserved.
Products and specifications subject to change without notice.